



City of Laguna Beach

# Commercial Recycling Guide



Please keep this guide  
as a reference for

**2024-2025**



**CR&R**  
INCORPORATED

environmental services

the face of a greener generation

# Welcome to CR&R Environmental Services!

**Effective July 1, 2024**, CR&R Environmental Services (CR&R) will be the franchise waste hauler for the City of Laguna Beach.

CR&R is proud to be your new waste and recycling collection services partner. We are committed to providing reliable services and groundbreaking environmental initiatives. We are leaders in environmental services with operations across Orange County, Los Angeles County, Riverside County, San Bernardino County, San Diego County, and Imperial County.

CR&R was founded in Stanton, California in 1963 by Clifford R. Ronnenberg. Since then, CR&R has utilized cutting-edge innovations and is in pursuit of a zero-waste disposal program.



CR&R is excited to begin waste and recycling services in the City of Laguna Beach. With years of experience in management, sustainability, and municipal waste operations, we are confident that all commercial business owners will experience a smooth and seamless transition.



# Commercial Landfill and Recycling Services Cart and Bin Options

Commercial business owners in Laguna Beach can choose between different cart and bin sizes for landfill and recycling waste services.

## Landfill Service

Number of Pickups Per Week	1x	2x	3x	4x	5x	6x
35 Gallon Cart	\$89.41	\$144.30	\$192.01	\$248.32	\$291.77	\$342.91
65 Gallon Cart	\$94.11	\$151.90	\$202.12	\$261.39	\$307.12	\$360.96
95 Gallon Cart	\$99.07	\$159.89	\$212.76	\$275.14	\$323.29	\$379.96
1.5 Yard (1/2 of split bin)	\$208.56	\$336.62	\$447.91	\$579.25	\$680.61	\$799.91
2 Yard (1/2 of split bin)	\$219.54	\$354.33	\$471.49	\$609.74	\$716.43	\$842.01
3 Yard	\$231.09	\$372.98	\$496.30	\$641.83	\$754.13	\$886.32
4 Yard	\$292.57	\$478.60	\$636.71	\$831.35	\$977.82	\$1,152.11



## Recycling Service - Commingled Recycling and Single Material Service

Number of Pickups Per Week	1x	2x	3x	4x	5x	6x
35 Gallon Cart	\$44.70	\$72.15	\$96.01	\$124.16	\$145.88	\$171.46
65 Gallon Cart	\$47.06	\$75.95	\$101.06	\$130.69	\$153.56	\$180.48
95 Gallon Cart	\$49.53	\$79.95	\$106.38	\$137.57	\$161.64	\$189.98
1.5 Yard (1/2 of split bin)	\$104.28	\$168.31	\$223.96	\$289.63	\$340.30	\$399.95
2 Yard (1/2 of split bin)	\$109.77	\$177.17	\$235.74	\$304.87	\$358.21	\$421.00
3 Yard	\$115.55	\$186.49	\$248.15	\$320.91	\$377.07	\$443.16
4 Yard	\$146.29	\$239.30	\$318.35	\$415.68	\$488.91	\$576.06



All rates are subject to annual rate adjustments on July 1<sup>st</sup> of each year, starting in 2025.

# Commercial Organics Cart and Bin Options

Commercial business owners in Laguna Beach can choose between different cart and bin sizes for source separated or co-collected organics.

## Organics Recycling Service

Number of Pickups Per Week	1x	2x	3x	4x	5x	6x
35 Gallon Cart	\$44.70	\$72.15	\$96.01	\$124.16	\$145.88	\$171.46
65 Gallon Cart	\$47.06	\$75.95	\$101.06	\$130.69	\$153.56	\$180.48
1 Yard (standalone)	\$99.07	\$159.89	\$212.76	\$275.14	\$323.29	\$379.96
2 Yard	\$109.77	\$177.17	\$235.74	\$304.87	\$358.21	\$421.00



**All rates are subject to annual rate adjustments on July 1<sup>st</sup> of each year, starting in 2025.**

## Source Separated and Co-Collected Organics

CR&R offers different types of organics collection services that best suit your business's needs. Businesses that utilize a landscaping service who hauls away their yard waste may opt for a food waste only container. However, businesses who produce both food waste and yard waste may opt for the co-collected organics container. Universal pricing is used for each type of organics material collection.



## Additional Container Sizes

Additional landfill, recycling, and organics container sizes are available beyond those listed. For alternative container size information and service level adjustments, please contact Laguna Beach's dedicated Customer Service at **(949) 662-3819**.

# California Senate Bill 1383

SB 1383 requires all commercial businesses to reduce their organic waste disposed in landfills. SB 1383 promotes edible food diversion, organic recycling, and lowering contamination levels in all waste streams. Organic waste, such as food scraps and yard trimmings, contribute to greenhouse gas emissions when anaerobically decomposed in landfills.

CR&R will collect your organic waste and transport it to one of its composting facilities. At this facility, the organic material is converted into compost.



## What can be composted?



*Food Waste / Food-Soiled paper*



*Yard Waste*

## Fats, Oils, and Grease

Commercial businesses who generate fats, oil, and grease must dispose of these materials utilizing a third party collection service. Placing these items in any of the CR&R provided containers will result in contamination.



# What Goes Where

To reduce contamination, use these guidelines and examples when sorting landfill, recycling, food scraps, and yard trimmings in your containers.

LANDFILL	RECYCLABLES	ORGANICS
<ul style="list-style-type: none"> <li>• Broken Glass/Mirrors</li> <li>• Ceramics</li> <li>• Diapers</li> <li>• Flexible Packaging</li> <li>• Pet Waste/Cat Litter</li> <li>• Waxed Paper</li> <li>• Styrofoam</li> <li>• Palm Fronds</li> </ul>  	<p><b>Plastic</b></p> <ul style="list-style-type: none"> <li>• Drink Bottles</li> <li>• Detergent Containers</li> <li>• Milk Containers</li> </ul> <p><b>Glass</b></p> <ul style="list-style-type: none"> <li>• Bottles</li> <li>• Jars</li> </ul> <p><b>Metal</b></p> <ul style="list-style-type: none"> <li>• Aluminum Cans</li> <li>• Tin Cans</li> </ul> <p><b>Paper</b></p> <ul style="list-style-type: none"> <li>• Flattened Cardboard</li> <li>• Unsolicited Mail</li> <li>• Magazines</li> <li>• Newspaper</li> <li>• Milk/Juice cartons</li> </ul>  	<p><b>Food Scraps</b></p> <ul style="list-style-type: none"> <li>• Fruits</li> <li>• Vegetables</li> <li>• Meat</li> <li>• Fish</li> <li>• Dairy</li> <li>• Grains</li> <li>• Coffee Grinds</li> <li>• Food-Soiled Paper</li> </ul> <p><b>Yard Waste</b></p> <ul style="list-style-type: none"> <li>• Grass</li> <li>• Leaves</li> <li>• Flowers</li> <li>• Weeds</li> <li>• Prunings</li> </ul>  

**Hazardous Waste is PROHIBITED in any of your containers.**

Starting July 1, 2024, the Yellow Bag Program will be phased out and replaced by an organics cart or bin collection service.

## Recycling Tips:

- Flatten your cardboard boxes to save space in your recycling container.



- Place your recyclable materials in your recycling container unbagged.

CR&R supports the City of Laguna Beach with their environmental initiatives, such as the ban to distribute single use plastic bags and balloons.

Please note any of these items should be disposed of in the black lid landfill cart.



# Edible Food Recovery Program

## ***Tier 1 and Tier 2 Generators***

SB 1383, also known as the Short-Lived Climate Pollutants Law, is a pivotal piece of legislation aimed at mitigating the environmental impact of organic waste in California. It targets the reduction of methane emissions, a potent greenhouse gas, generated by landfills.

Under SB 1383, there are two tiers of businesses with specific mandates regarding organic waste management.

### ***Tier 1***

Tier 1 businesses typically have more produce, fresh grocery, and shelf-stable foods to donate. They are required to comply with regulations that promote organic waste recycling and reduction.



### ***Tier 2***

Tier 2 businesses typically have more prepared foods to donate, which often require more careful handling to meet food safety requirements.



## ***How to Comply***

### ***Step 1***

Recover Edible Food

### ***Step 2***

Establish Written Agreement or Contract with the edible food recovery agency

### ***Step 3***

Recordkeeping and Reporting



Scan the QR code to obtain further information on edible food recovery.



# Good Samaritan Law

The Good Samaritan Food Donation Act, commonly known as the Good Samaritan Law, is a US federal statute enacted in 1996 to promote food donation to nonprofit organizations. The law shields food donors from civil and criminal liability if they donate in good faith to qualified nonprofits for charitable distribution, protecting them from damages or injuries caused by consumed food.

## ***Major Agencies to Donate to in Orange County***

Food recovery organizations coordinate the retrieval of donated food from your business location and transport it to nonprofit recipients such as shelters, food kitchens, pantries, or missions. For additional information regarding food donation agencies, please scan the QR code.



## ***Tips to Prevent Food Waste***

- Provide complimentary recycled food boxes for customers to take home their leftovers.
- Only order the amount of food you need.
- Freeze food when applicable to safely store it for a later use.
- Repurpose unused food into new meals.

## ***Benefits of Food Recovery Programs***

**1. Support for Food-Insecure Communities:** Edible food donations provide nutritious meals to individuals and families facing food insecurity, helping to alleviate hunger and improve overall well-being.

**2. Promotion of Sustainability:** By diverting food waste from landfills, edible food recovery supports sustainable practices and conserves valuable natural resources, such as water and energy, used in food production.

**3. Legal Compliance:** Compliance with food recovery regulations, such as those outlined in legislation like SB 1383, helps businesses avoid potential fines, penalties, and reputational damage associated with non-compliance.

**4. Positive Public Image:** Participating in edible food recovery programs enhances a company's reputation and brand perception by demonstrating a commitment to environmental stewardship, social equity, and community support.



# Special Services

## ***Bulky Item Collection***

Items that cannot properly fit in your container, such as a chair or desk, are considered bulky items and require a special pickup. Commercial business owners are entitled to four (4) bulky item pickups per year, with ten (10) items per pickup.



## ***Commercial Wheel Out Services***

CR&R staff will collect your containers from your enclosure within a distance of 0' to 25' and put them back after service for no charge.

CR&R staff can collect your containers from your enclosure within a distance of 25' to 50' and put them back after service for **\$43.71 per container, per month**.

CR&R staff can collect your containers from your enclosure within a distance of 50' to 75' and put them back after service for **\$52.45 per container, per month**.



## ***Commercial Scout Service***

If your carts or bins are further than 75', CR&R staff will collect your containers utilizing a stinger truck. The containers will be serviced and put back in their enclosure for **\$43.84 per container, per service frequency, per month**.

## ***Hazardous Waste***

Hazardous waste products are flammable, corrosive, reactive, or toxic. Hazardous waste includes items such as batteries, cleaning products, car care products, paint, electronic waste, universal waste, and pharmaceutical waste. Please do not dispose of hazardous waste in your CR&R containers.

## ***Temporary Services***

CR&R provides temporary services for construction and clean up projects. Bin sizes for temporary services vary from 3-yard bins to 40-yard rolloff bins.



**To schedule a bulky item pickup, set up wheel out or scout service, or for additional information on temporary services, please call Laguna Beach's dedicated Customer Service at (949) 662-3819.**

## Non-Containerization

Non-containerization occurs when landfill, recyclable, or organic materials are not placed in a CR&R provided container with the lid fully closed. Non-containerization is prohibited in the City of Laguna Beach.



If non-containerization occurs, CR&R will provide two (2) written notices with no fee. Additional notices provided will include a **\$50.58 fee per instance.**

For questions regarding container sizing and non-containerization, please contact our Laguna Beach Sustainability Team at [LagunaBeach-Recycles@crrmail.com](mailto:LagunaBeach-Recycles@crrmail.com).



## Semi-Annual Shred Event

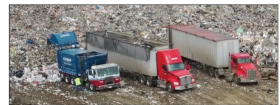
Commercial business owners in Laguna Beach may bring a maximum of ten (10) banker boxes of paper to shred events. Proof of business in Laguna Beach will be required. Additional information pertaining to each shred event will be released as each event nears.



## Where Do Your Materials Go After Collection?

### ***Landfill Material***

The materials placed in your landfill container cannot be recycled or repurposed into something new. These items are taken to one of the landfills in Orange County for disposal.



### ***Recyclables***

The recyclables from your recycling container are processed at CR&R's Material Recovery Facility (MRF). The recyclables are separated utilizing a process of manual and mechanical sorting.



### ***Food Scraps and Yard Trimmings***

The food scraps and yard trimmings from your organics container are taken to one of CR&R's approved compost facilities.





# Holiday Schedule

CR&R observes the following holidays throughout the year:

<b>Labor Day</b>	<b>Thanksgiving Day</b>	<b>Christmas Day</b>
<b>New Years Day</b>	<b>Memorial Day</b>	<b>Independence Day</b>

If a holiday falls during the week, collection for the remainder of the week will be postponed by one (1) day. Example: If Independence Day is on Thursday, and your property's service day is Friday, your property will be serviced on Saturday.

## ***Green Business Certification Program***

The Green Business Certification Program promotes green business practices and recognizes businesses that implement sustainability practices. Businesses that are certified receive local and statewide recognition. For more information about the Green Business Certification Program, please visit [greenbusinessca.org](https://greenbusinessca.org).

## ***Frequently Asked Questions***

### **Why did this change of waste haulers occur?**

In July 2023, Laguna Beach's City Council voted to accept a solid waste and recycling franchise agreement with CR&R Environmental Services on behalf of the City.

### **Is my business required to have all three (3) waste streams?**

Yes. SB 1383 requires all commercial businesses to have all three (3) waste stream containers on site.

### **Where should I dispose of my palm fronds?**

Due to palm fronds coarse and wiry material, palm fronds must be placed in the landfill container to avoid instances of contamination.

## ***Follow Us On Social Media***

Want to stay up to date with CR&R?  
Scan the QR Code for all our links!





**CR&R**  
I N C O R P O R A T E D

**environmental services**

the face of a greener generation

P.O. Box 125 Stanton, CA 90680-2912



For any further questions,  
comments, or concerns,  
contact us at:

**Laguna Beach**

**Customer Service**

**(949) 662-3819**

M-F 8 AM to 5 PM

Saturday 8 AM to 12 PM

or **LagunaBeach-Recycles@crrmail.com**

For more information  
regarding our programs,  
services, or general information  
please visit: **www.crrinc.com**  
or **www.lagunabeachcity.net/crrtransition**